

FSOT镍芯 TYPE

(1) ORDERING CODE 产品名称

SR53	DR	4.5 × 7	FSOT	C2.0	E3.9
材质	类型	外径	高度	形状	中柱
					槽宽

(2) SUITABLE MATERIAL 适用材质
SR53.....

(3) APPLICATION 产品应用
FOR COMMUNICATION DEVICES,NOTEBOOK
PHONE.....
通信器材,手提電腦,手机.....

(4) SHAPE 图形标识

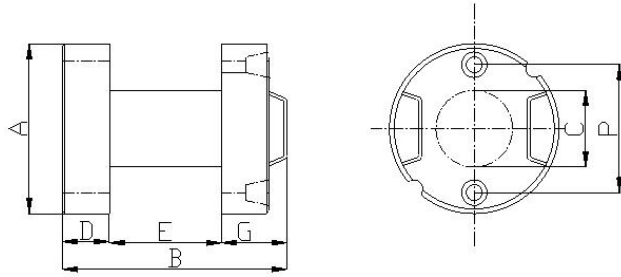
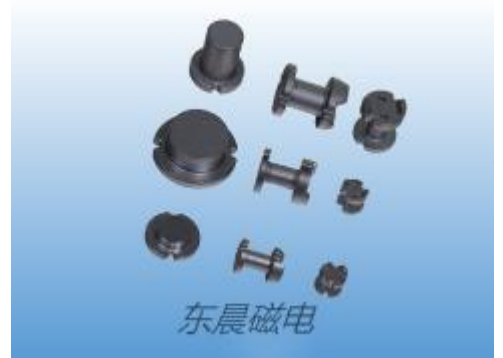


Fig1

(5) DIMENSIONS 尺寸

Unit:mm

FSOT型											
NO.	CORE	Fig	A			B	C	D	E	F	
1	DR4.5×7FSOT C2.0E3.9P2.5	1	4.50±0.10			7.00±0.20	2.00±0.20	1.00±0.20	3.90±0.20	2.10±0.20	
2	DR4.5×7FSOT C2.3E3.8P2.5	1	4.50±0.10			7.00±0.20	2.30±0.20	1.00±0.20	3.80±0.20	2.20±0.20	
3	DR4.5×7FSOT C2.5E3.8P2.5	1	4.50±0.10			7.00±0.20	2.50±0.20	1.00±0.20	3.80±0.20	2.20±0.20	
4	DR5×7.5FSOT C2.8E4.0P2.5	1	5.00±0.10			7.50±0.20	2.80±0.20	1.00±0.20	4.00±0.20	2.50±0.20	
5	DR6×5FSOT C2.0E1.5P4.0	1	6.00±0.20			5.00±0.20	2.00±0.20	1.20±0.20	1.50±0.20	2.30±0.20	
6	DR6×6FSOT C2.3E3.0P4.0	1	6.00±0.20			6.00±0.20	1.20±0.20	1.20±0.20	3.00±0.20	1.80±0.20	
7	DR6×6.25FSOT C3.0E3.0P4.0	1	6.00±0.20			6.25±0.20	3.00±0.20	1.00±0.20	3.00±0.20	2.25±0.20	
8	6.7×4.6FSOT C2.4E2.2P4.8	1	6.70±0.20			4.60±0.20	2.40±0.20	0.80±0.20	2.20±0.20	1.60±0.20	
9	7.5×5.5FSOT C3.0E2.0P5.0	1	7.50±0.20			5.50±0.20	3.60±0.20	1.50±0.20	2.00±0.20	2.00±0.20	
10	DR7.5×7.5FSOTC3.6E4.0P5.0	1	7.50±0.20			7.50±0.20	3.60±0.20	1.50±0.20	4.00±0.20	2.00±0.20	
11	DR7.8×5.3FSOT C3.5E1.6P5.0	1	7.80±0.20			5.30±0.20	3.50±0.20	1.20±0.20	1.60±0.20	2.50±0.20	
12	DR7.8×5.5FSOT C3.5E1.6P5.0	1	7.80±0.20			5.50±0.20	3.50±0.20	1.20±0.20	1.60±0.20	2.70±0.20	
13	DR7.8×7FSOT C3.5E3.2P5.0	1	7.80±0.20			7.00±0.20	3.50±0.20	1.20±0.20	3.20±0.20	2.60±0.20	
14	DR7.8×7FSOT C4.0E3.3P5.0	1	7.80±0.20			7.00±0.20	4.00±0.20	1.20±0.20	3.30±0.20	2.50±0.20	
15	DR7.8×7.2FSOT C3.2E3.0P5.0	1	7.80±0.20			7.20±0.20	3.50±0.20	1.40±0.20	3.00±0.20	2.80±0.20	
16	DR7.8×7.3FSOT C3.5E3.5P5.0	1	7.80±0.20			7.30±0.20	3.50±0.20	1.30±0.20	3.50±0.20	2.50±0.20	
17	DR7.8×8FSOT C3.5E4.2P5.0	1	7.80±0.20			8.00±0.20	3.50±0.20	1.20±0.20	4.20±0.20	2.80±0.20	
18	DR7.8×9.3FSOT C3.5E5.0P5.0	1	7.80±0.20			9.30±0.20	3.50±0.20	1.50±0.20	5.00±0.20	2.80±0.20	
19	DR7.8×9.5FSOT C3.6E5.4P5.0	1	7.80±0.20			9.50±0.20	3.60±0.20	1.50±0.20	5.40±0.20	3.00±0.20	
20	DR7.8×9.7FSOT C3.6E5.5P5.0	1	7.80±0.20			9.70±0.20	3.60±0.20	1.50±0.20	5.50±0.20	2.70±0.20	
21	DR7.8×10FSOT C3.5E6.0P5.0	1	7.80±0.20			10.0±0.20	3.50±0.20	1.50±0.20	6.00±0.20	2.50±0.20	
22	DR7.8×10FSOT C4.0E5.7P5.0	1	7.80±0.20			10.0±0.20	4.00±0.20	1.50±0.20	5.70±0.20	2.80±0.20	
23	DR7.8×10.2FSOTC4.0E6.0P5.0	1	7.80±0.20			10.2±0.20	4.00±0.20	1.50±0.20	6.00±0.20	2.70±0.20	
24	DR8×8.5FSOT C4.0E4.5P5.0	1	8.00±0.20			8.50±0.20	4.00±0.20	1.50±0.20	4.50±0.20	2.50±0.20	
25	DR8×9.5FSOT C4.0E5.4P5.0	1	8.00±0.20			9.50±0.20	4.00±0.20	1.50±0.20	5.40±0.20	2.60±0.20	
26	DR8×12FSOT C4.0E7.0P5.0	1	8.00±0.20			12.0±0.30	4.00±0.30	2.00±0.30	7.00±0.30	3.00±0.30	
27	DR10×6FSOT C6.0E1.7P5.0	1	10.0±0.20			6.00±0.30	6.00±0.30	1.50±0.30	1.70±0.30	2.80±0.30	
28	DR10×8FSOT C4.7E3.5P5.0	1	10.0±0.20			8.00±0.30	4.70±0.30	1.50±0.30	3.50±0.30	2.00±0.30	
29	DR10×8FSOT C5.0E4.0P5.0	1	10.0±0.20			8.00±0.30	5.00±0.30	1.50±0.30	3.50±0.30	2.00±0.30	
30	DR10×10FSOT C5.0E5.6P6.4	1	10.0±0.20			10.0±0.30	5.00±0.30	1.60±0.30	5.60±0.30	2.80±0.30	

31	DR10×10FSOT C4.5E5.5P6.4	1	10.0±0.20			10.0±0.30	4.50±0.30	1.70±0.30	5.50±0.30	2.80±0.30	
32	DR10×12FSOT C5.0E7.0P5.0	1	10.0±0.20			12.0±0.30	5.00±0.30	1.50±0.30	7.00±0.30	3.50±0.30	
33	DR10×14FSOT C5.0E9.0P5.0	1	10.0±0.20			14.0±0.30	5.00±0.30	1.50±0.30	9.00±0.30	3.50±0.30	
34	DR10×14FSOT C5.4E8.5P5.0	1	10.0±0.20			14.0±0.30	5.40±0.30	1.70±0.30	8.50±0.30	3.80±0.30	
35	DR11×5.3FSOT C4.3E1.8P5.0	1	11.0±0.30			5.30±0.30	4.30±0.30	1.50±0.30	1.80±0.30	2.00±0.30	
36	DR12×10FSOT C6.7E4.2P7.5	1	12.0±0.30			10.0±0.30	6.70±0.30	2.00±0.30	4.20±0.30	3.80±0.30	
37	DR12×12FSOT C6.0E6.5P7.5	1	12.0±0.30			12.0±0.30	6.00±0.30	2.00±0.30	6.50±0.30	3.50±0.30	
38	DR12×13FSOT C6.0E7.0P7.5	1	12.0±0.30			13.0±0.30	6.00±0.30	2.20±0.30	7.00±0.30	3.80±0.30	
39	DR12×14.5FSOT C6.2E8.5P7.5	1	12.0±0.30			14.5±0.30	6.20±0.30	2.00±0.30	8.50±0.30	4.00±0.30	
40	DR12×14.5FSOT C6.6E8.5P7.5	1	12.0±0.30			14.5±0.30	6.60±0.30	2.00±0.30	8.50±0.30	4.00±0.30	
41	DR12×14.5FSOT C7.0E8.5P7.5	1	12.0±0.30			14.5±0.30	7.00±0.30	2.00±0.30	8.50±0.30	4.00±0.30	

说明：1、图形尺寸B、C、F可根据客户要求更改；
 2、以上仅列典型规格，可根据客户之特殊要求进行定制；